

Centenary Stitches errata

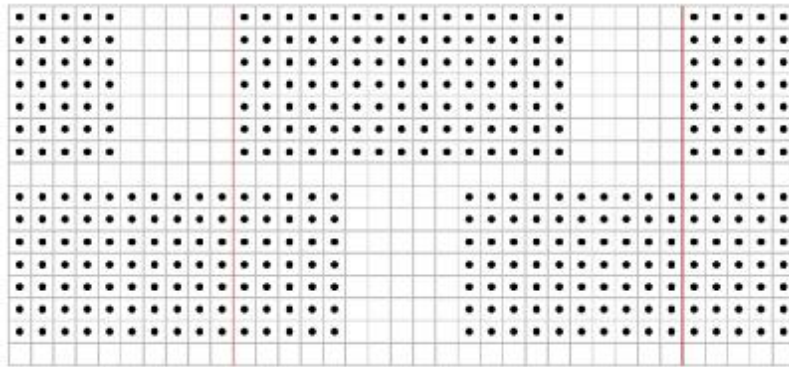
Violet's Jacket (page 25)

Under the "Size" heading, the Actual Bust should read 35 (47, 55, 65)"

Under the "Pattern" heading, the BACK section should have you cast on 91 (115, 136, 167) sts.

Under the "Pattern" heading, the RIGHT FRONT AND SLEEVE (page 26, first column, toward the bottom), after "Repeat Rows 11 to 14 once more, then Row 11 and 12 again. 50 (70, 80, 95) sts" the next instruction should read "Work in garter stitch for 16 (20, 24, 28) rows." This is before "Change to CCS and work 6 rows."

Revised chart (page 26): Basketweave Pattern for Back (all sizes)



Corrected chart is:

Fitted Sweater (page37)

Under the "Materials" heading, the yarn that Wendy used to knit the actual garment was Drops Lima; 65% wool, 35% alpaca; 101 yds per 50g ball.

Rose Leaf Lace Wrap (page40)

Under the "Materials" heading, the amount of yarn required is 100 (150, 175, 200, 250) g 4-ply / fingering wool

Scarf Vest (page51)

Under the “Construction” heading, the Scarf Vest Stripe Pattern should be added as follows:

SCARF VEST STRIPE PATTERN

	Rows 1, 3, 5 (RS): K.
	Rows 2, 4, 6: P.
●	Row 7: K.
	Row 8: P.
●	
●	

On page 54, the following caption should be added: “Previous page: Vest scarf in two DK weight yarns. This page: Molly Marie Buckley models the Crossover. © Thomas Hinckley”

Grace’s Mourning Shawl (page61)

Under the “Pattern” heading, CENTRE instructions should be a 6-row repeat as follows:

Row 1: With the smaller needle, knit.

Row 2: With the larger needle, knit.

Rows 3 to 6: With smaller needle, knit.

Repeat Rows 1 to 6 until the piece measures 60”.

On the smaller needles, knit 5 rows.

Ann’s Tuxedo Jacket (page100)

The POCKETS heading should be revised to read POCKETS – MAKE 2

Straight and Striped Ties (page115)

Both ties were crocheted by Gail Belinda Lee.